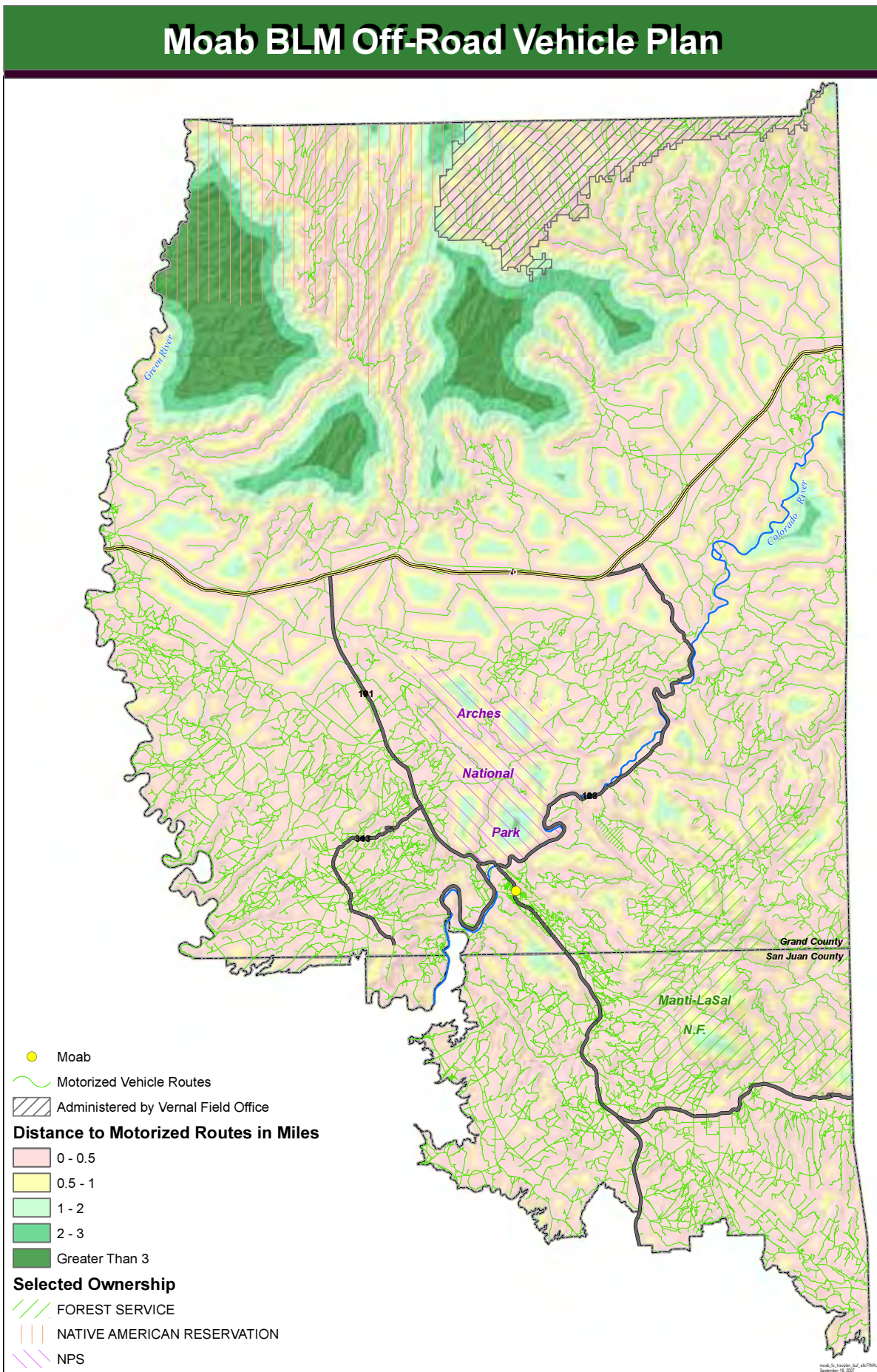
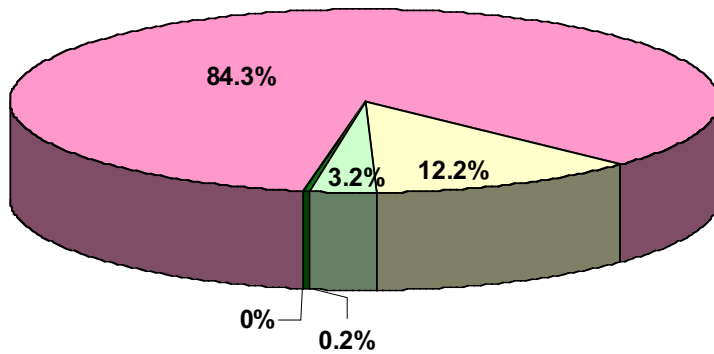
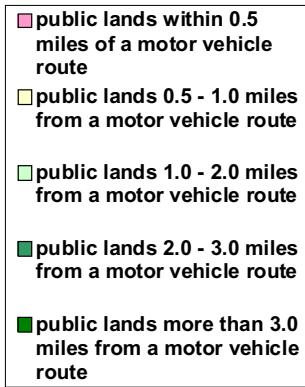


BLM's ORV Proposal

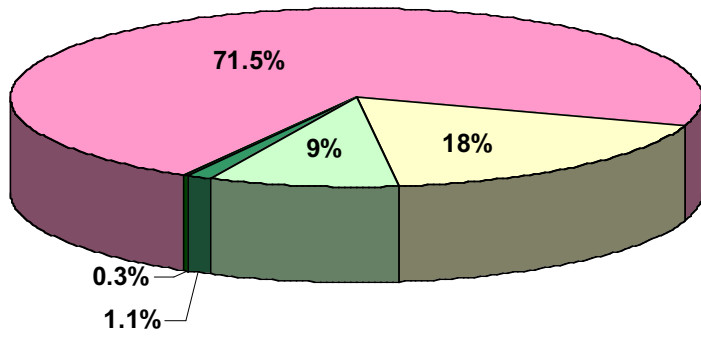
Less than 4% of the scenic redrock canyon country in the Moab area (i.e. public lands south of I-70) will be farther than 1 mile from an off-road vehicle (ORV) route. BLM's proposal would eliminate nearly all opportunities to escape the sights and sounds of ORV use.



Redrock Heritage Proposal

With minor adjustments, roadless areas that provide quiet, natural backcountry experiences for traditional non-motorized users can be protected. Although the scales would still tip decidedly towards motorized recreation—with over 5,000 miles of route available—a minimal reduction in BLM’s proposed maze of ORV routes provides a more balanced plan.

- public lands within 0.5 miles of a motor vehicle route
- public lands 0.5 - 1.0 miles from a motor vehicle route
- public lands 1.0 - 2.0 miles from a motor vehicle route
- public lands 2.0 - 3.0 miles from a motor vehicle route
- public lands more than 3.0 miles from a motor vehicle route



RRHP Off-Road Vehicle Plan

